

Navigating AI: Perspectives from the CSU Chancellor's Office

Kendra Ard
Chief Infrastructure & Administrative Officer
ITS – Chancellor's Office

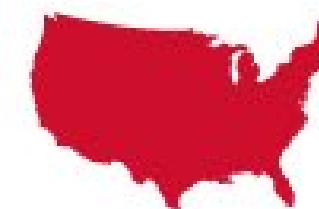
Matt Hughes
Network Architect, Common Network Infrastructure
ITS – Chancellor's Office





PROFILE OF THE CSU

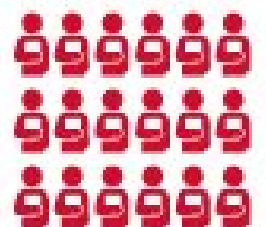
The California State University is the country's largest four-year public university system, providing opportunities for upward mobility to a broadly diverse student body and empowering those students to become leaders in the changing workforce.



**NATION'S
LARGEST**
four-year public
university system



23
UNIVERSITIES
and eight
off-campus centers



MORE THAN
450,000
students



MORE THAN 4 MILLION
alumni and counting



ONE IN EVERY 20
Americans with a college
degree earned it at the CSU



ONE IN 10
employees in California
is a CSU graduate



ALUMNI
network is larger than the
population of 23 U.S. states



AI in Higher Education



- Generative AI is a disruptor to every industry including higher education.
- Everyone is still figuring it out – even the institutions in the headlines
- AI will require investment and capacity-building, even in a difficult budget climate

**Private
Enterprise vs
Public
Higher-Education**



Time to value



High Cost



Product Selection

Private Enterprise vs Public Higher-Ed



Cost

Business
Value

**Private
Enterprise vs
Public
Higher-Education**



Research



Future Work Force



Equity

SAN JOSÉ STATE
UNIVERSITY

SONOMA STATE
UNIVERSITY

CSUDH
CALIFORNIA STATE UNIVERSITY, DOMINGUEZ HILLS

CALIFOR
LON

Campus Level Equity

CALIFORNIA STATE UNIVERSITY
Stanislaus

California State
University Chico

Cal Poly
Humboldt.

CAL POLY

Channel Islands
CALIFORNIA STATE UNIVERSITY

Cal State Fullerton

Cal State
Monterey Bay

SDSU | San Diego State
University

CALIFORNIA STATE UNIVERSITY
BAKERSFIELD

FRESNO STATE
Discovery. Diversity. Distinction.

CAL MARITIME

CALIFORNIA STATE UNIVERSITY
SAN BERNARDINO

CSU The California State University

23 Campuses

Some > 40000 Students

Some < 4000 Students

CALIFORNIA STATE UNIVERSITY
LONG BEACH

Cal State Fullerton

Cal Poly Pomona

CALIFORNIA STATE UNIVERSITY
BAKERSFIELD

CAL STATE LA
CALIFORNIA STATE UNIVERSITY, LOS ANGELES

SAN FRANCISCO
STATE UNIVERSITY

FRESNO STATE
Discovery. Diversity. Distinction.

CAL POLY

Channel Islands
CALIFORNIA STATE UNIVERSITY

SACRAMENTO
STATE

CSUN | CALIFORNIA
STATE UNIVERSITY
NORTHRIIDGE

CAL STATE
EAST BAY

California State
University Chico

SONOMA STATE
UNIVERSITY

Cal State
Monterey Bay

SAN JOSÉ STATE
UNIVERSITY

CSUDH
CALIFORNIA STATE UNIVERSITY, DOMINGUEZ HILLS

Cal Poly
Humboldt.

SAN JOSÉ STATE
UNIVERSITY

SONOMA STATE
UNIVERSITY

CSUDH
CALIFORNIA STATE UNIVERSITY, DOMINGUEZ HILLS

CALIFOR
LON

Campus Level Equity

CALIFORNIA STATE UNIVERSITY
Stanislaus

California State
University **Chico**

Cal Poly
Humboldt.

 **CAL POLY**

 Channel Islands
CALIFORNIA STATE UNIVERSITY

Cal State **Fullerton**

Cal State
Monterey Bay

SDSU | San Diego State
University

CALIFORNIA STATE UNIVERSITY
BAKERSFIELD

FRESNO STATE
Discovery. Diversity. Distinction.

 CAL MARITIME

CALIFORNIA STATE UNIVERSITY
SAN BERNARDINO

CSU The California State University

23 Campuses

7 x R2 Designation

1 x R1 Designation

CALIFORNIA STATE UNIVERSITY
LONG BEACH

Cal State **Fullerton**

 Cal Poly **Pomona**

CALIFORNIA STATE UNIVERSITY
BAKERSFIELD

 **CAL STATE LA**
CALIFORNIA STATE UNIVERSITY, LOS ANGELES

 **SAN FRANCISCO
STATE UNIVERSITY**

FRESNO STATE
Discovery. Diversity. Distinction.

 **CAL POLY**

 Channel Islands
CALIFORNIA STATE UNIVERSITY

 **SACRAMENTO
STATE**

CSUN | CALIFORNIA
STATE UNIVERSITY
NORTHRIIDGE

CAL STATE
EAST BAY

California State
University **Chico**

SONOMA STATE
UNIVERSITY

Cal State
Monterey Bay

SAN JOSÉ STATE
UNIVERSITY

CSUDH
CALIFORNIA STATE UNIVERSITY, DOMINGUEZ HILLS

Cal Poly
Humboldt.

Student Equity

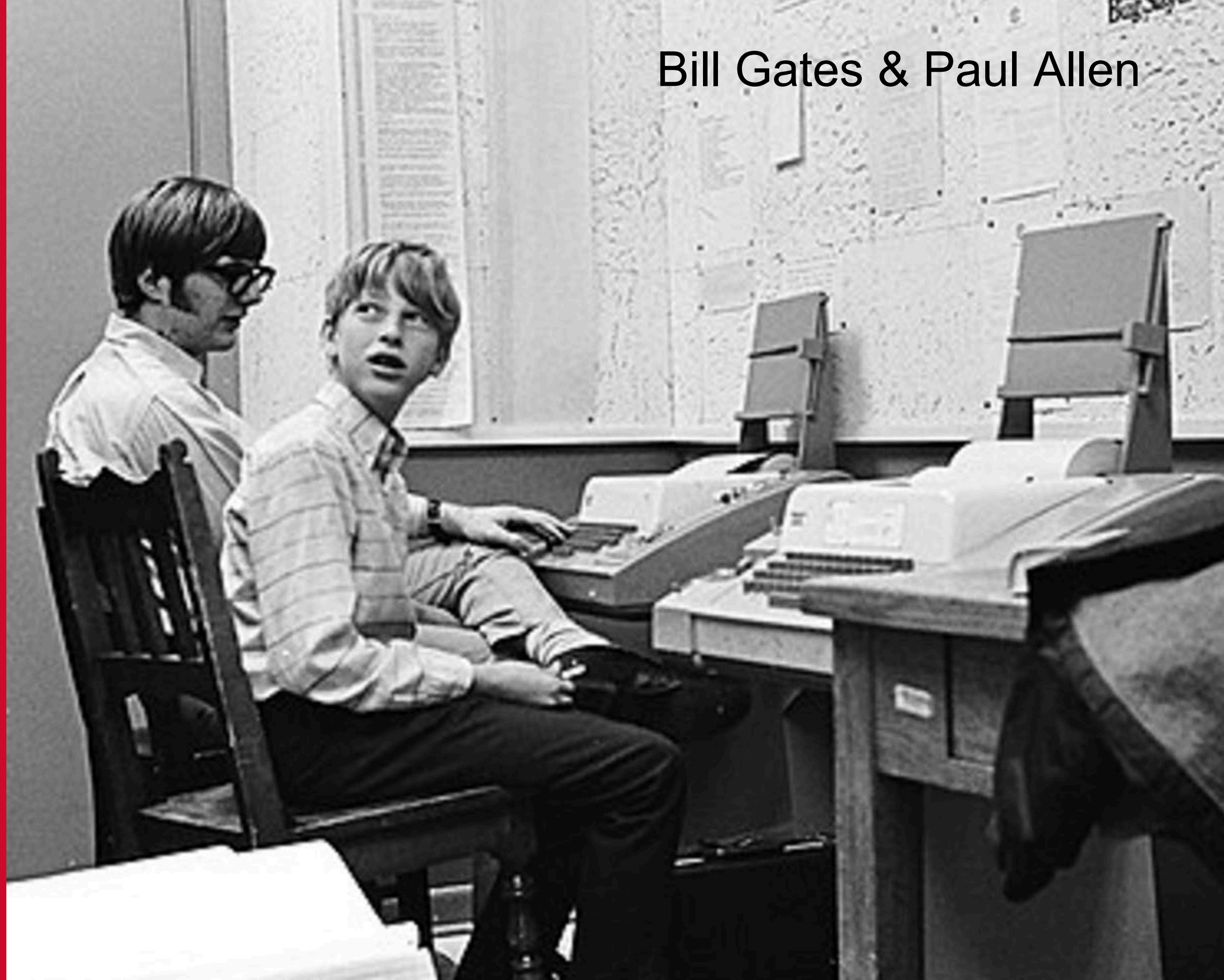
Disruptive Technology

Equity



Early Adopters Become Entrenched Leaders

Bill Gates & Paul Allen



GenAI and Challenges at Scale



- Costs
- Governance in a federated system
- Change management

GenAI and Benefits at Scale



- Data Insights
- Improved efficiencies
- Shared resources and best practices to establish baseline
- A culture of sharing

Innovation or Collaboration?



**Collaboration
While Campus
Strategy is
Still Flexible**



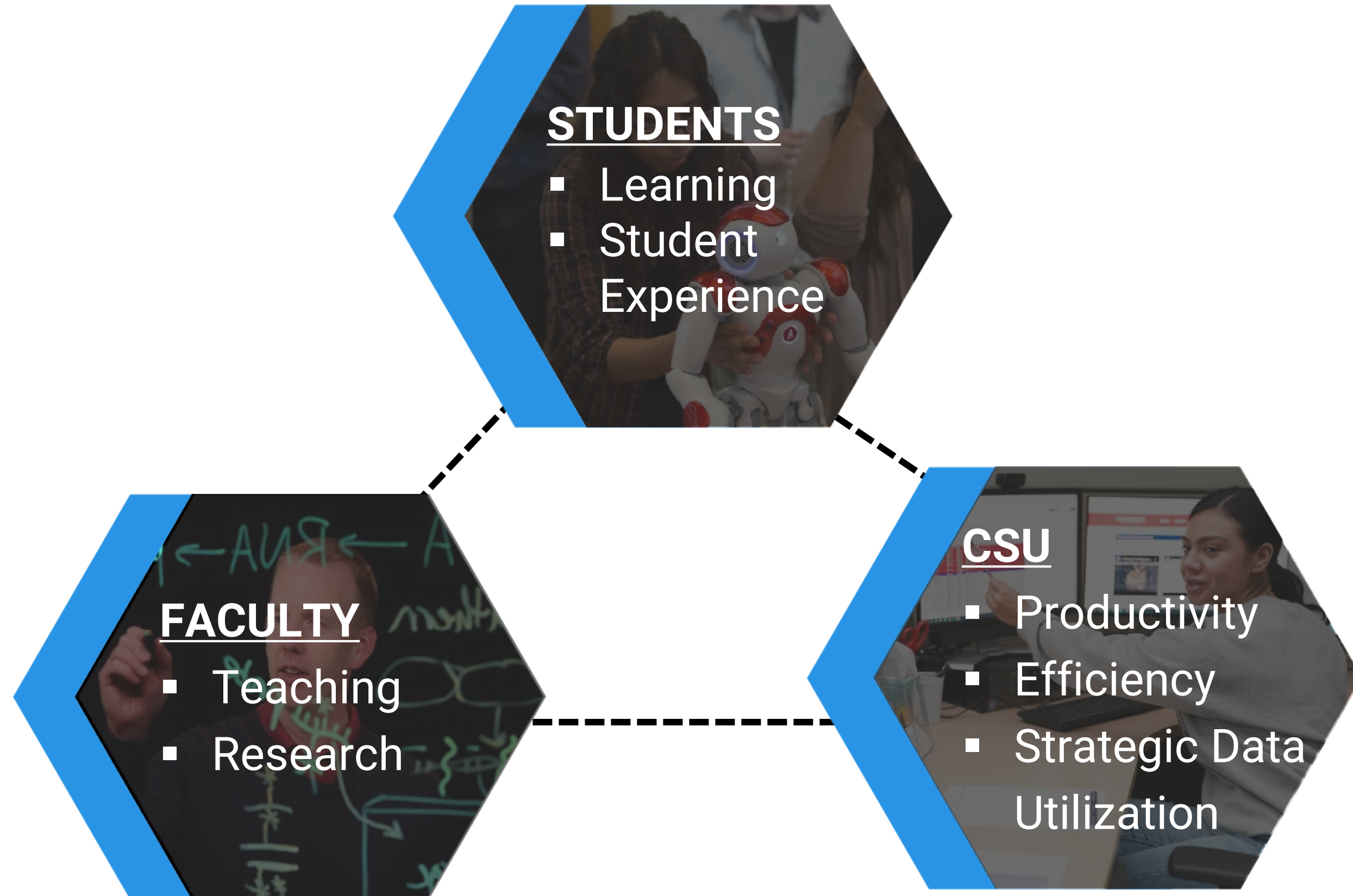
A low-angle, upward-looking shot of several graduates in black and maroon gowns, wearing purple flower leis. They are cheering with their arms raised, and several black graduation caps are floating in the air above them against a clear blue sky. The entire image has a semi-transparent blue overlay.

Impact

The CSU will produce the best prepared, most diverse graduates for an AI-enabled workforce at an unprecedented scale in an optimized and cost-efficient way.

Empowering AI in the CSU

Impacting California and Beyond



Elevated Student Experience, Future-Ready Graduates

Goal

Equip students with personalized, future-focused learning tools and seamless campus experiences that improve student success and foster real-world readiness.

Objectives

- All students gain hands-on AI competencies to be prepared for the workforce
- Equitable access to AI tools, learning experiences, and internships/apprenticeships
- AI-enabled personalized support to meet student success needs, including accessibility
- Enhanced digital experiences with the university from application to graduation



Next-Gen Teaching, Pioneering Research

Goal

Empower faculty with cutting-edge AI teaching technologies and training and AI-driven research capabilities, resulting in transformative pedagogical practices and groundbreaking scholarly contributions.

Objectives

- Enable transformative teaching through training and resources
- Provide industry insights on workforce needs and skills
- Empower research through equitable AI infrastructure
- Address concerns about adoption and incorporation of AI and incentivize faculty exploration
- Protect intellectual property



Insight-Driven Operational Excellence

Goal

Leverage AI to optimize operations within a complex system and utilize the scale and depth of our data to drive impactful, informed decision-making.

Objectives

- Use AI to leverage data and drive informed decision-making and optimize operations
- Create AI-enabled shared services and platforms
- Reduce duplication of effort within and across campuses



Key Strategic Initiatives



**AI Workforce
Acceleration Board**



AI Commons Hub



AI Educational Innovations

AI Workforce Acceleration Board

Industry leaders, State of CA and CSU stakeholders will partner to identify and advocate for AI skills needed in California's workforce and beyond.



AI Educational Innovations

Faculty development, resources and a recognition program to highlight excellence and innovation in teaching, learning, scholarship and research.

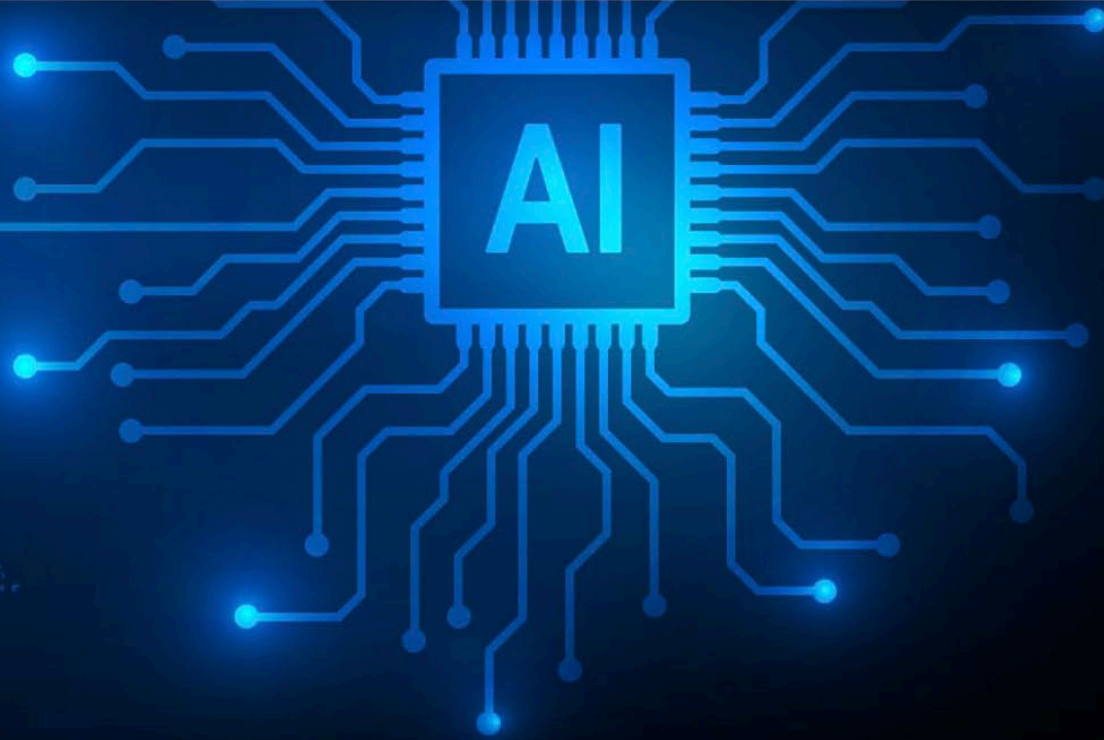
INCENTIVIZING CHANGE



The California State University

AI Commons

Tools and information for CSU Students, Faculty, Staff, and Alumni



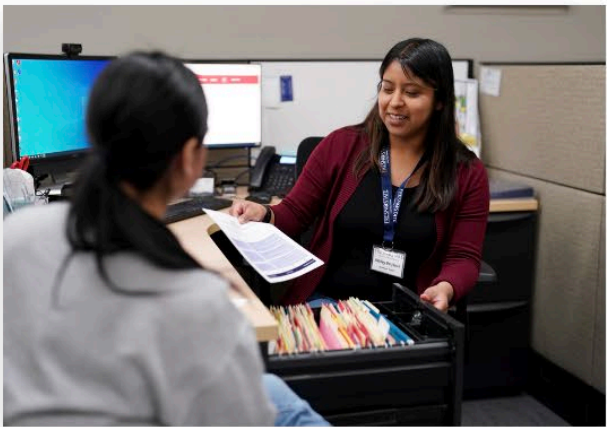
STUDENTS

Whether you're new to AI or expanding your knowledge, explore AI's integration into your CSU academic journey. AI tools can enhance personalized learning, data analysis, and collaborative problem solving preparing you for a tech-driven workforce. Ethical guidance from your university and faculty, the CSU will support you in the world of AI.



FACULTY

Explore innovative ways to integrate AI into your curriculum with confidence through resources, case studies, and training designed to support purposeful and effective use of AI tools in the classroom. Access AI tools, resources, and best practices designed for faculty by faculty.



STAFF

The CSU is embracing AI and is committed to helping our employees develop AI literacy. AI can be a powerful tool to perform daily tasks to enhance efficiency, productivity, and generate innovative ideas in the workplace. Learn about AI tools and resources designed

Investments

STUDENTS

AI Workforce Acceleration

Acceleration Board
CSU AI Summit
CSU AI Challenges

FACULTY

AI Educational Innovations

Faculty Incentives
CSU-wide Training Resources

THE CSU

Equitable Access to AI

AI Commons Hub
CSU Development Platform
GPT for all CSU Students



Thank you



www.calstate.edu